

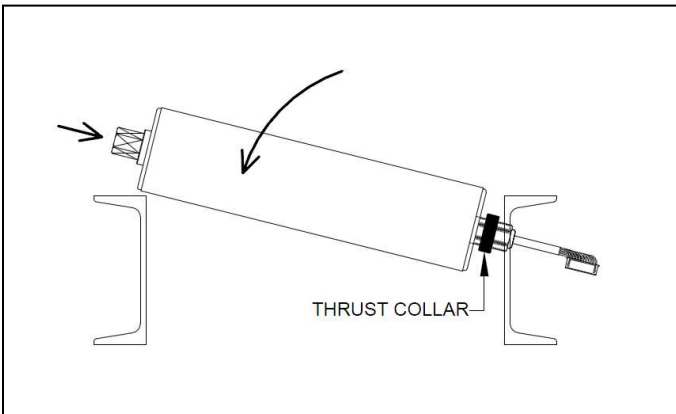
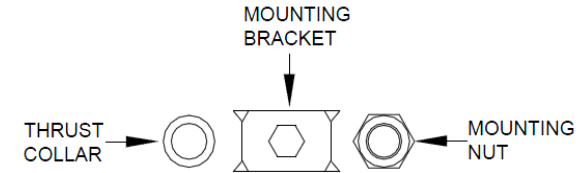


## Installation Instructions for PM635 Power Moller

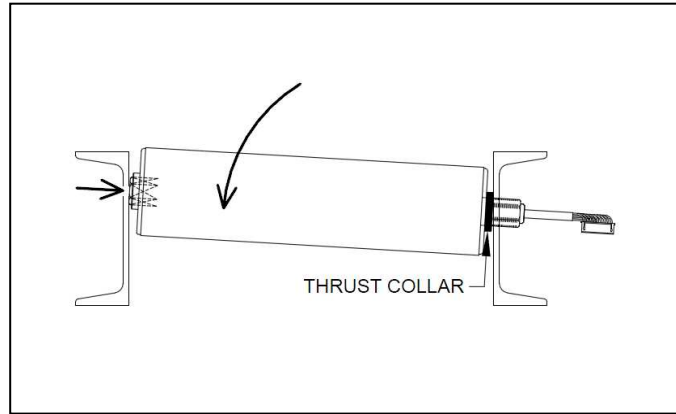
We thank you for your purchase of our Power Moller. Please read these installation instructions first to understand the product, operating voltage, and cautions.

### To use the product properly and safely:

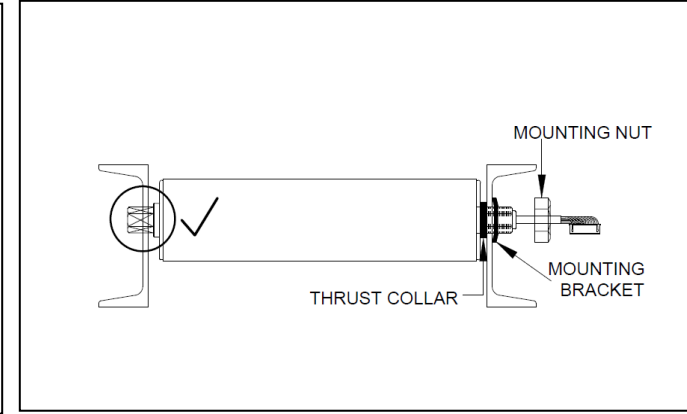
- Do not use the product around flammable materials, ignitable gas, or in an explosive, corrosive, or wet environment (except waterproof units).
- Ensure power is off when the roller is removed, and when wiring or maintenance is performed; otherwise there is risk of injury
- Ensure the conveyor is properly grounded.
- Respect the electrical regulations of the site and equipment. (Labor, safety, and sanitary regulations, electrical codes, etc.)
- Ensure the Power Moller's shaft is properly fastened with the standard mounting brackets supplied before operating the unit.
- Do not pull, twist, or damage the power cable and connector.



1 – Insert cable end in to frame with thrust collar on the inside of the frame.



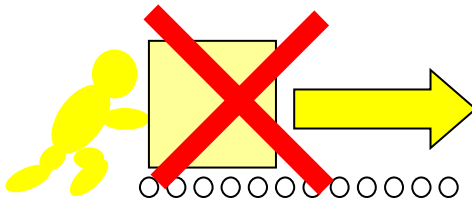
2 – Depress spring loaded shaft and insert into the frame.



3 – Ensure spring loaded shaft fully extends through the frame. Place mounting bracket, then the mounting nut, on the cable side shaft. Tighten mounting nut to 110.6 lb-ft ± 10%

### **Warning!**

Overspeeding the roller may cause failure. Do not manually or mechanically push product on the conveyor. Failure to follow this warning will void the warranty.



### **Power Source**

24VDC Power Supply or 24VDC Battery  
Battery or fullwave rectifier and smooth current <10% ripple

ITOHDENKI USA, INC.  
135 Stewart Road Hanover Industrial Estates  
Wilkes-Barre, PA 18706-1462  
Phone: 570.820.8811 Fax: 570.820.8838  
E-mail: [info@itohdenki.com](mailto:info@itohdenki.com) [www.itohdenki.com](http://www.itohdenki.com)

**Caution:** Unit's shaft must be fixed to the conveyor frame with mounting bracket and mounting nut supplied with the unit. Moving or rotation of the shaft may break the power cable causing the Power Moller to stop functioning.