

# PM427AS AC Motor Driven Roller

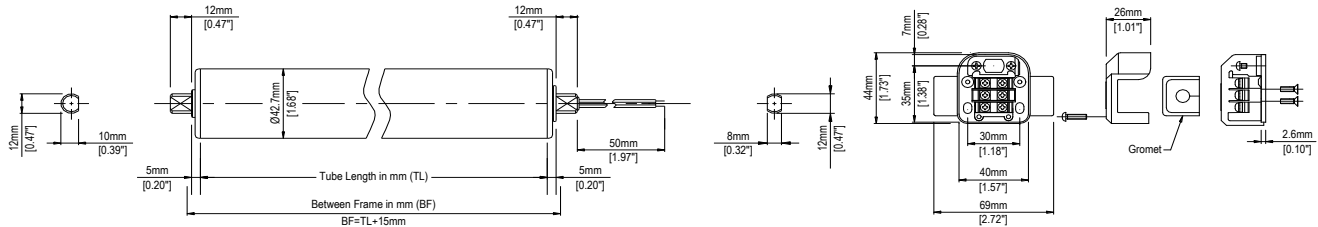


Diameter: 1.68" (42.7mm)  
 Voltage: 115 V Single Phase  
 230 V Three Phase

## Features

- Thermally stable motor that can be operated 24/7 without fear of overheating
- ABEC 1 Bearings
- DOM, zinc plated, carbon steel tube
- Designed for slim compact lines

## Dimensions



Mounting Hardware: E-920 Terminal Block

## Performance Data

3Φ 230V 60Hz						
Speed Code	No-Load Speed (ft/min)	Tangential Force Starting (lb)	Torque Starting (lb-in)	Current (A)		
				No-Load	Rated	Starting
5	18.4	11.9	10.0	0.05	0.05	0.07
8	27.9	7.9	6.6			
10	42.3	5.2	4.3			
15	59.1	4.3	3.6			
20	90.2	2.8	2.4			
30	140.4	1.8	1.5			
1Φ 115V 60Hz						
Speed Code	No-Load Speed (ft/min)	Tangential Force Starting (lb)	Torque Starting (lb-in)	Current (A)		
				No-Load	Rated	Starting
5	18.4	6.0	5.0	0.11	0.11	0.13
8	27.9	4.0	3.4			
10	42.3	2.6	2.2			
15	59.1	2.3	1.9			
20	90.2	1.6	1.3			
30	140.4	0.9	0.8			

## Environment

- Ambient Temperature 14~104° F (-10~40°C)
- < 90% Relative Humidity (No Condensation)
- No Corrosive Gases
- Vibration < 0.5G

## Operation

- Cycle: 3s ON; 2s OFF
- Continuous or Intermittent duty
- Do Not Exceed 150% of No-Load Speed

## Minimum Tube Lengths and Options

Without spring loaded shaft

With spring loaded shaft

Standard

200 mm (7.87") 220 mm (8.66")

Lagging  
 Wide range of rubber laggings available

VP V-Belt pulley end cap  
 220 mm (8.66")

BR Brake  
 250 mm (9.84")

DR Drip proof IP-55  
 200 mm (7.87")

WA Waterproof IP-65  
 250 mm (9.84")

270 mm (10.63")

220 mm (8.66")

250 mm (9.84")