

PM380AS AC Motor Driven Roller

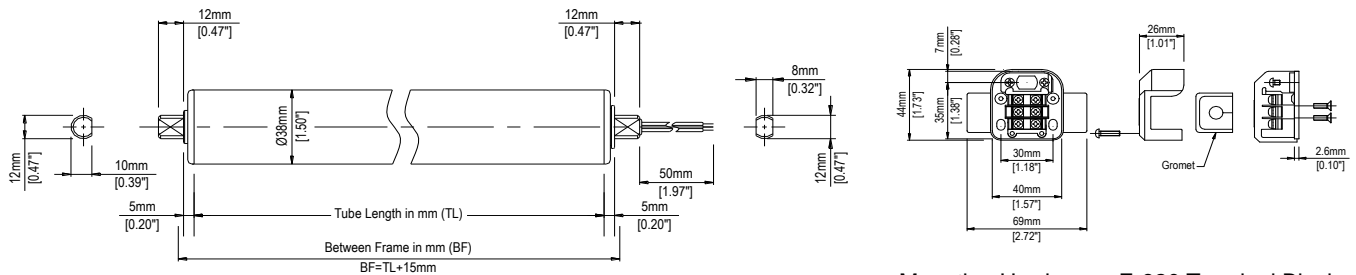


Diameter: 1.5" (38mm)
 Voltage: 115 V Single Phase
 230 V Three Phase

Features

- Thermally stable motor that can be operated 24/7 without fear of overheating
- ABEC 1 Bearings
- DOM, zinc plated, carbon steel tube
- Designed for slim compact lines

Dimensions



Mounting Hardware: E-920 Terminal Block

Performance Data

3Φ 230V 60Hz						
Speed Code	No-Load Speed (ft/min)	Tangential Force Starting (lb)	Torque Starting (lb-in)	Current (A)		
				No-Load	Rated	Starting
5	16.4	13.4	10.0	0.05	0.05	0.07
8	24.9	8.9	6.6			
10	37.7	5.8	4.3			
15	52.5	4.9	3.6			
20	80.4	3.2	2.4			
30	125.0	2.0	1.5			
1Φ 115V 60Hz						
Speed Code	No-Load Speed (ft/min)	Tangential Force Starting (lb)	Torque Starting (lb-in)	Current (A)		
				No-Load	Rated	Starting
5	16.4	6.7	5.0	0.11	0.11	0.13
8	24.9	4.5	3.4			
10	37.7	3.0	2.2			
15	52.5	2.6	1.9			
20	80.4	1.8	1.3			
30	125.0	1.1	0.8			

Environment

- Ambient Temperature 14~104° F (-10~40°C)
- < 90% Relative Humidity (No Condensation)
- No Corrosive Gases
- Vibration < 0.5G

Operation

- Cycle: 3s ON; 2s OFF
- Continuous or Intermittent duty
- Do Not Exceed 150% of No-Load Speed

Minimum Tube Lengths and Options

Without spring loaded shaft

With spring loaded shaft

Standard

200 mm (7.87") 220 mm (8.66")

Lagging
 Wide range of rubber laggings available

VP V-Belt pulley end cap
 220 mm (8.66")

BR Brake
 250 mm (9.84") 270 mm (10.63")
 DR Drip proof IP-55
 200 mm (7.87") 220 mm (8.66")
 WA Waterproof IP-65
 250 mm (9.84") 250 mm (9.84")